

OCTAVIA OLIVIA SUMAILAH AIT-524 HOMEWORK ASSIGNMENT 10

1. Retrieved a list of employees and the departments from the employees and department tables using the WHERE clause.

```
SQL> DESC department_tbl
Name                               Null?   Type
-----
DEPT_ID                             NOT NULL CHAR(5)
DEPT_DESC                           VARCHAR2(35)
DEPT_LOCATION                       VARCHAR2(35)
EMP_ID                               NOT NULL CHAR(5)

SQL> SELECT e.emp_id, e.emp_fname, emp_lname, d.dept_id, d.dept_desc FROM employee_tbl e, department_tbl d WHERE e.emp_id = d.emp_id;

EMP_ID EMP_FNAME EMP_LNAME
-----
DEPT_ DEPT_DESC
-----
QM670 Gifty      mensah
FI652 Finance

OS248 octavia   sumallah
IT876 information technology

ES832 emmanuella smith
HR638 human resource

SQL> OCTAVIA OLIVIA SUMAILAH
```

2. Retrieved a list of employees and the departments from the employees and department tables, using the JOIN... USING key word.

```
SQL> SELECT emp_id, e.emp_fname, emp_lname, d.dept_id, d.dept_desc FROM employee_tbl e JOIN department_tbl d USING (emp_id);

EMP_ID EMP_FNAME EMP_LNAME
-----
DEPT_ DEPT_DESC
-----
QM670 Gifty      mensah
FI652 Finance

OS248 octavia   sumallah
IT876 information technology

ES832 emmanuella smith
HR638 human resource

SQL> OCTAVIA OLIVIA SUMAILAH
```

3. Retrieved a list of employees and the departments from the employees and department tables, using the JOIN... ON key word.

```
SQL> SELECT e.emp_id, e.emp_fname, emp_lname, d.dept_id, d.dept_desc FROM employee_tbl e JOIN department_tbl d ON e.emp_id = d.emp_id;

EMP_ID EMP_FNAME EMP_LNAME
-----
DEPT_ DEPT_DESC
-----
QM670 Gifty      mensah
FI652 Finance

OS248 octavia   sumallah
IT876 information technology

ES832 emmanuella smith
HR638 human resource

SQL> OCTAVIA OLIVIA SUMAILAH
```

4. Retrieved a list of employees and the departments from the employees and department tables using two conditions in the WHERE clause.

```
SQL> SELECT e.emp_id, e.emp_fname, emp_lname, d.dept_id, d.dept_desc FROM employee_tbl e, department_tbl d WHERE e.emp_id = d.emp_id AND (dept_location = 'fairfax' OR dept_desc = 'information technology')
AND emp_lname LIKE 'SK';

no rows selected

SQL> OCTAVIA OLIVIA SUMAILAH
```

5. Retrieved a list of employees and the departments from the employees and department tables, using the JOIN... USING key word, with two additional conditions in the where clause.

```
SQL> SELECT emp_id, e.emp_fname, emp_lname, d.dept_id, d.dept_desc FROM employee_tbl e JOIN department_tbl d USING (emp_id) WHERE emp_fname IS NOT NULL AND emp_lname IN ('sumallah', 'smith', 'mensah');

EMP_ID EMP_FNAME EMP_LNAME
-----
DEPT_ DEPT_DESC
-----
QM670 Gifty      mensah
FI652 Finance

OS248 octavia   sumallah
IT876 information technology

ES832 emmanuella smith
HR638 human resource

SQL> OCTAVIA OLIVIA SUMAILAH
```

OCTAVIA OLIVIA SUMAILAH AIT-524 HOMEWORK ASSIGNMENT 10

6. Retrieved a list of employees and the departments from employee_tbl, department_tbl and benefit-tbl tables using the WHERE clause.

```
SQL> SELECT e.emp_id, e.emp_fname, emp_lname, d.dept_id, d.dept_desc FROM employee_tbl e, department_tbl d, benefits_tbl b WHERE e.emp_id = d.emp_id AND e.emp_id = b.emp_id;
no rows selected
SQL> OCTAVIA OLIVIA SUMAILAH
```

7. Retrieved a list of employees and the departments from the employee_tbl, department_tbl and benefit-tbl tables, using the JOIN... USING key word.

```
SQL> SELECT emp_id, e.emp_fname, emp_lname, d.dept_id, d.dept_desc FROM employee_tbl e JOIN department_tbl d USING (emp_id) JOIN benefits_tbl b using (emp_id);
no rows selected
SQL> OCTAVIA OLIVIA SUMAILAH
```

8. Retrieved a list of employees and the departments from the employee_tbl, department_tbl and payroll_tbl tables, using the JOIN... ON key word.

```
SQL> SELECT e.emp_id, e.emp_fname, emp_lname, d.dept_id, d.dept_desc FROM employee_tbl e JOIN department_tbl d ON e.emp_id = d.dept_id JOIN payroll_tbl p ON e.emp_id = p.salary;
no rows selected
SQL> OCTAVIA OLIVIA SUMAILAH
```

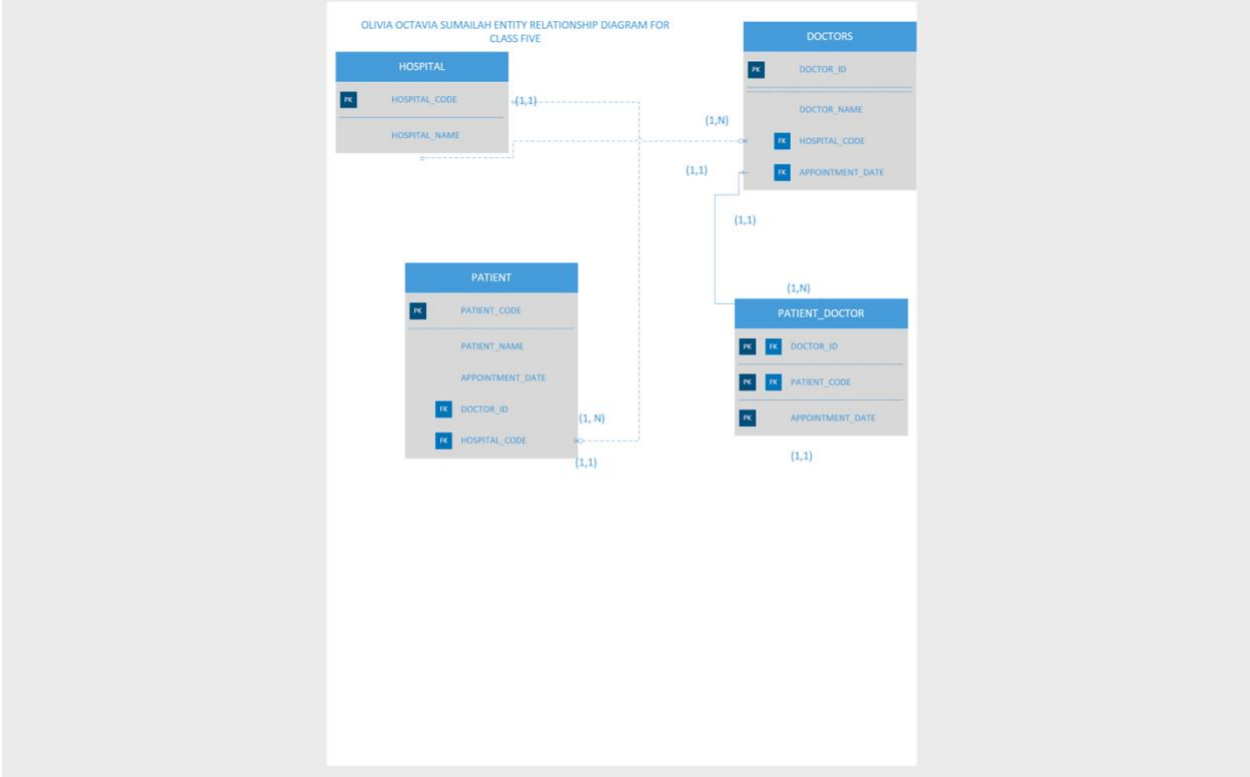
9. Retrieved a list of employees and the departments from the employee_tbl, department_tbl and benefit-tbl tables using two conditions in the WHERE clause.

```
SQL> SELECT e.emp_id, e.emp_fname, emp_lname, d.dept_id, d.dept_desc, b.ben_id FROM employee_tbl e, department_tbl d, benefits_tbl b WHERE e.emp_id = d.emp_id AND e.emp_id = b.emp_id AND emp_lname LIKE 'S%';
no rows selected
SQL> OCTAVIA OLIVIA SUMAILAH
```

10. Retrieved a list of hospital recods from the hospital_tbl, doctors_tbl, patient_tbl, and patientdoctors tables, using the JOIN... USING key word where the appointment date is greater than 01-Jan-99 and the patient name is not null.

```
SQL> SELECT hosp_code, d.doctor_name, p.pat_name, appoint_date FROM hospital_tbl h JOIN doctors_tbl d USING (hosp_code) JOIN patient_tbl p using (doctor_id) JOIN patientdoctor_tbl using (doctor_id) WHERE appoint_date > '01-JAN-99' AND pat_name IS NOT NULL;
no rows selected
SQL> OCTAVIA OLIVIA SUMAILAH
```

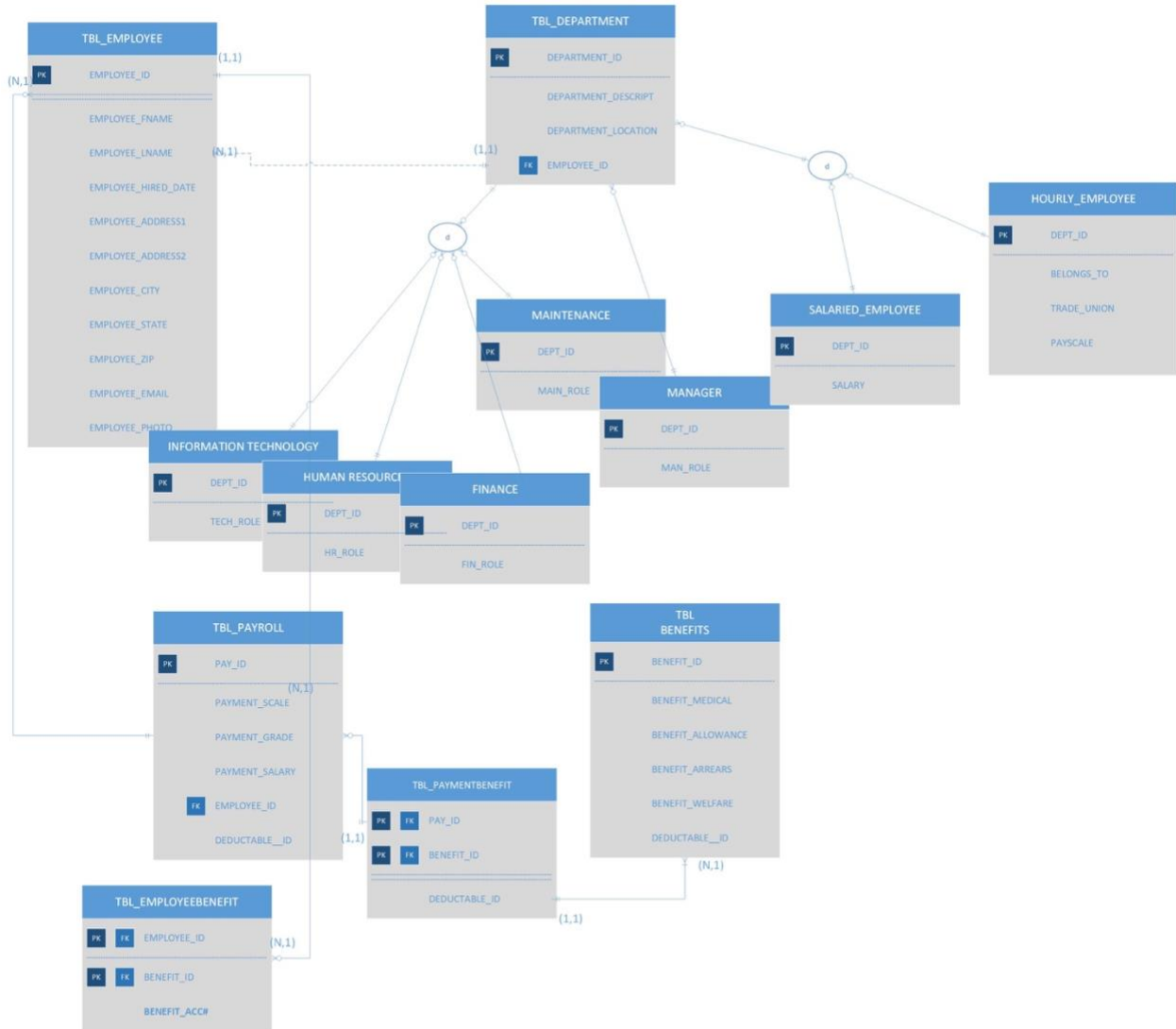
OCTAVIA OLIVIA SUMAILAH AIT-524 HOMEWORK ASSIGNMENT 10



OCTAVIA OLIVIA SUMAILAH AIT-524 HOMEWORK ASSIGNMENT 10

OLIVIA OCTAVIA SUMAILAH AIT524-P01 HOMEWORK ASSIGNMENT3 SOLUTION

ENTITY RELATIONSHIPS (ER) AND THE EMBEDDED ENTITY RELATIONSHIP DIAGRAM FOR THE PROPOSED PAYROLL MANAGEMENT SYSTEM



(1,1)